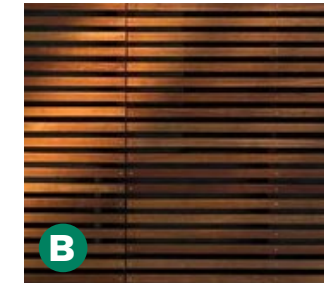
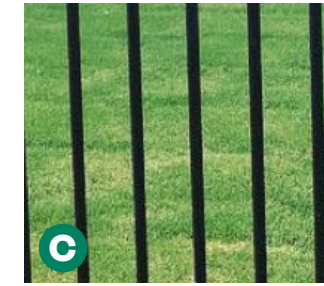


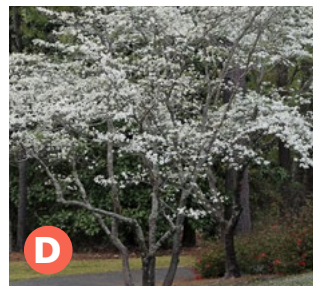
**A**  
Concrete Pavers on pedestal system



**B**  
Ipe Wood Benches



**C**  
Metal Railings and Guardrail



**D**  
Service Berry  
*Amelanchier canadensis*



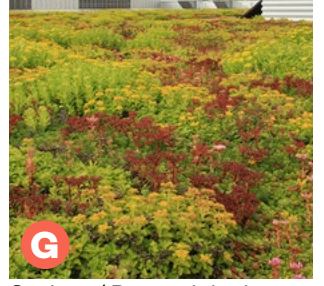
**E**  
Boxwood



**F**  
Blue Grama Grass  
*Bouteloua gracilis 'Blonde'*

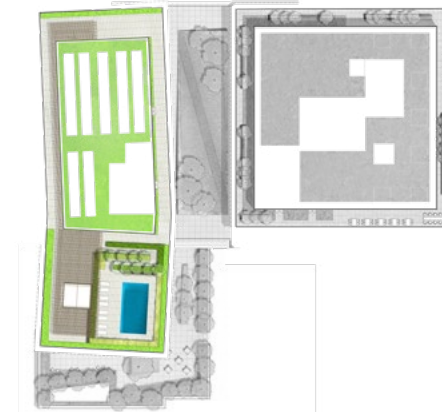


**F**  
Mexican Feather Grass  
*Nasella tenuissima*



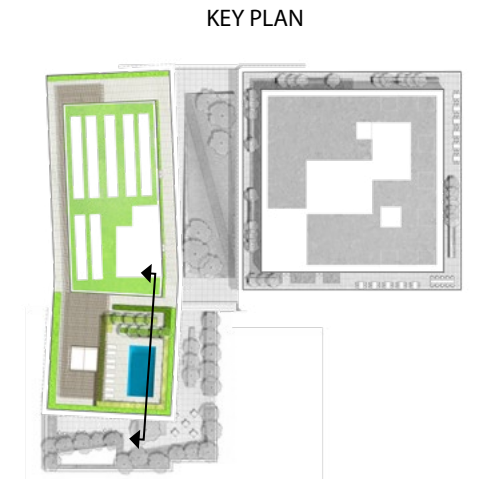
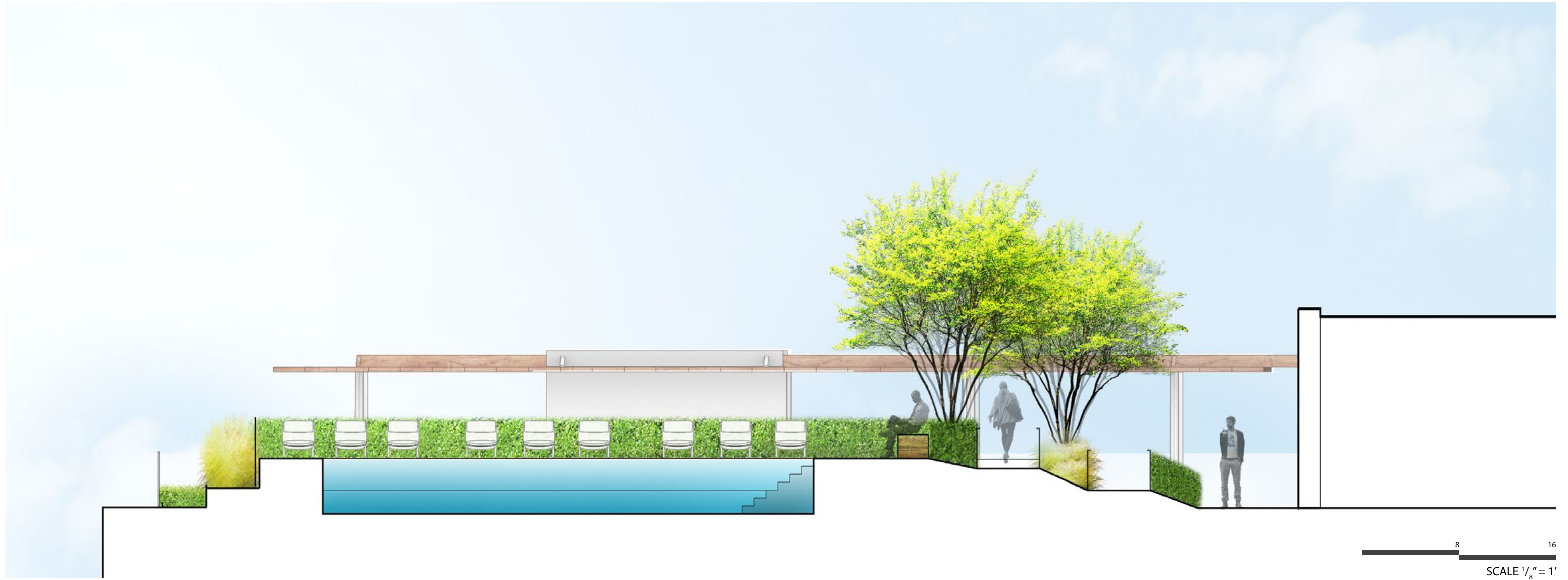
**G**  
Sedum / Perennial mix

KEY PLAN



# Materials and Planting- Residential Roof

PUD Stage II Filing: Capitol Crossing III LLC and Capitol Crossing IV LLC: Square 566, Lots 861-862 (part of Record Lot 50)



## Landscape Elevation- Residential Roof

PUD Stage II Filing: Capitol Crossing III LLC and Capitol Crossing IV LLC: Square 566, Lots 861-862 (part of Record Lot 50)



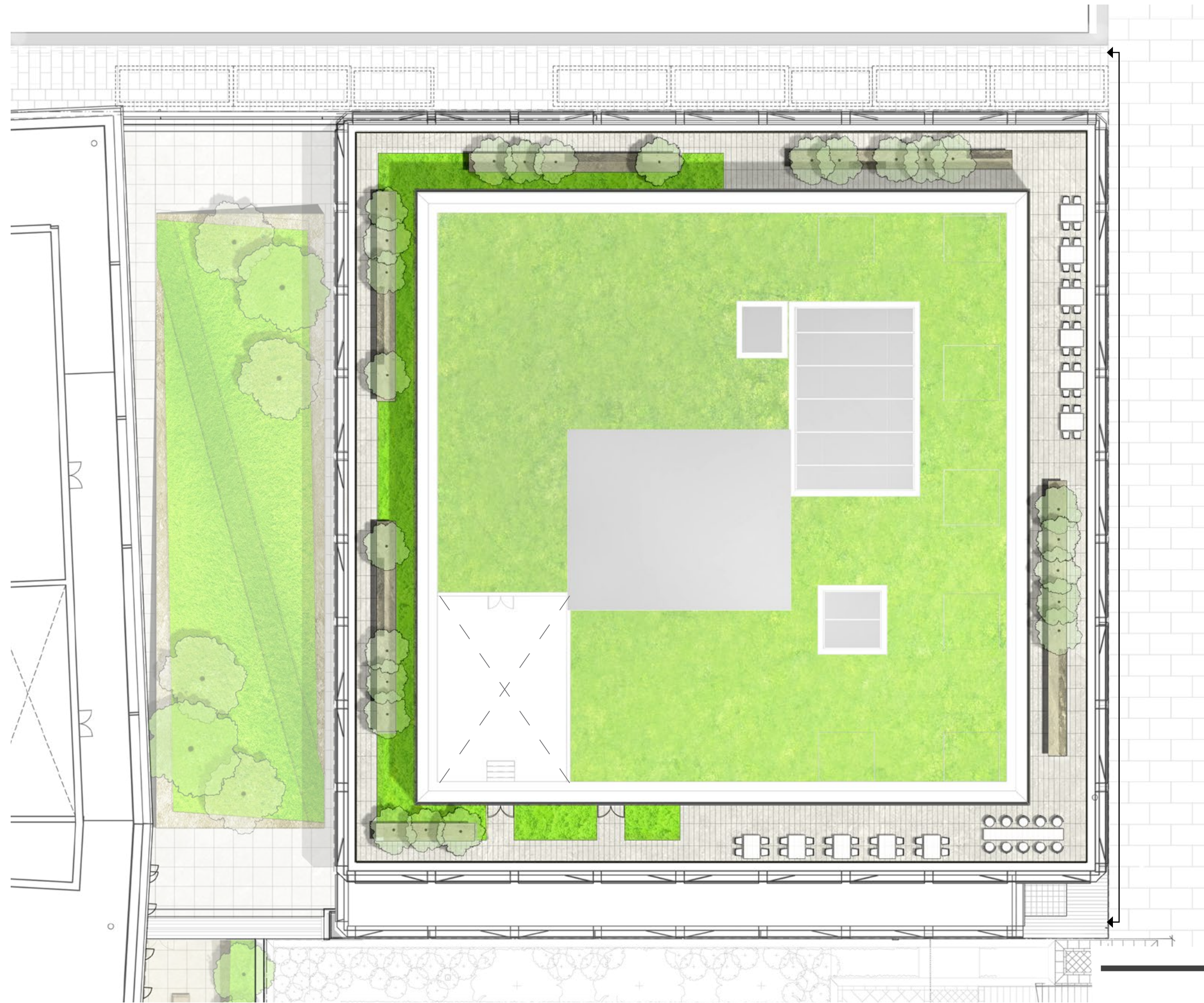
## Landscape View- Residential Roof

PUD Stage II Filing: Capitol Crossing III LLC and Capitol Crossing IV LLC: Square 566, Lots 861-862 (part of Record Lot 50)



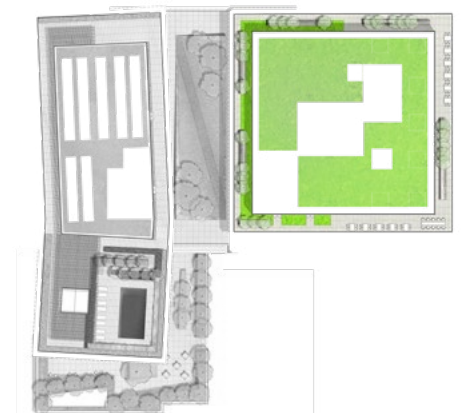
## Landscape View- Residential Roof

PUD Stage II Filing: Capitol Crossing III LLC and Capitol Crossing IV LLC: Square 566, Lots 861-862 (part of Record Lot 50)



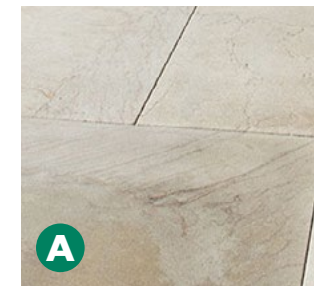
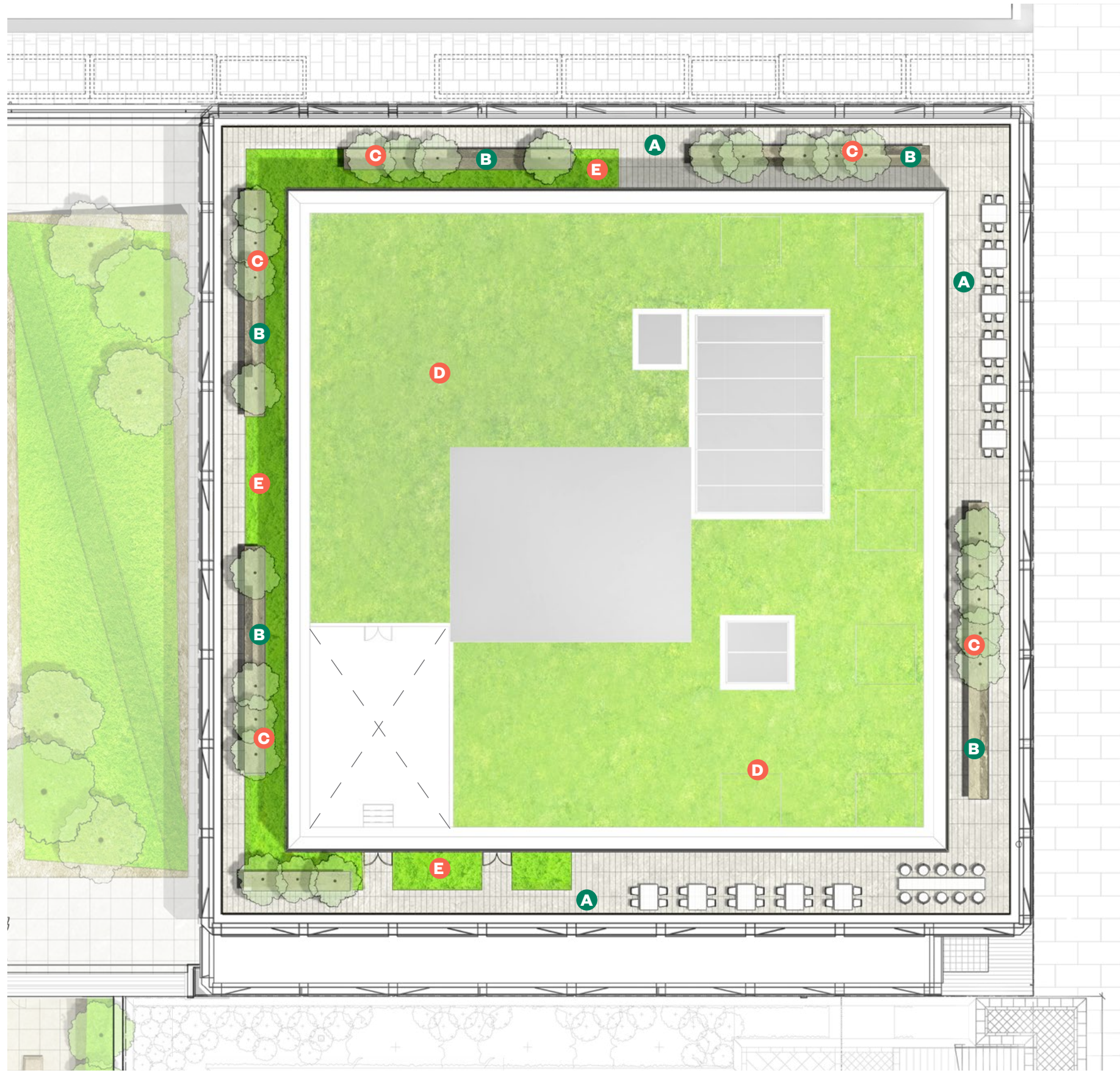
20 40  
SCALE 1" = 20'

KEY PLAN

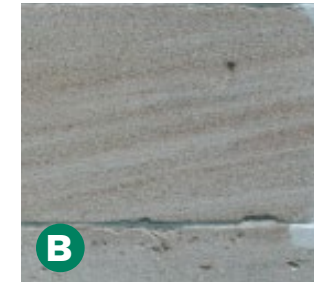


## Landscape Plan- Hotel Roof

PUD Stage II Filing: Capitol Crossing III LLC and Capitol Crossing IV LLC: Square 566, Lots 861-862 (part of Record Lot 50)



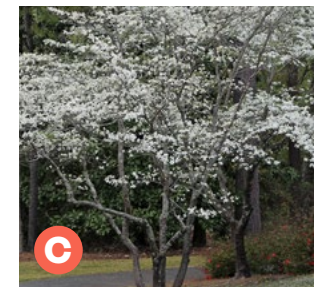
**A**  
Sandstone Pavers on  
pedestal system



**B**  
Sandstone - Honed or  
Smooth finish



**B**  
Sandstone- Natural finish



**C**  
Service Berry  
*Amelanchier canadensis*



**D**  
Sedum Mix



**E**  
Christmas Fern  
*Polystichum acrostichoides*

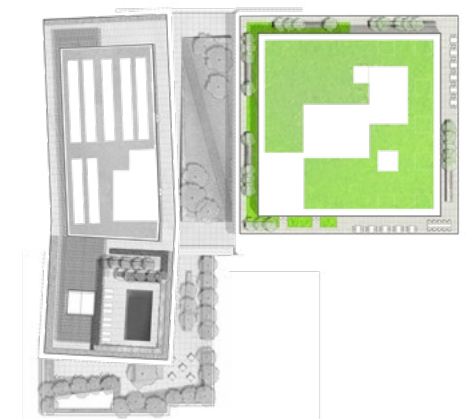


**E**  
Holly Fern  
*Cyrtomium falcatum*



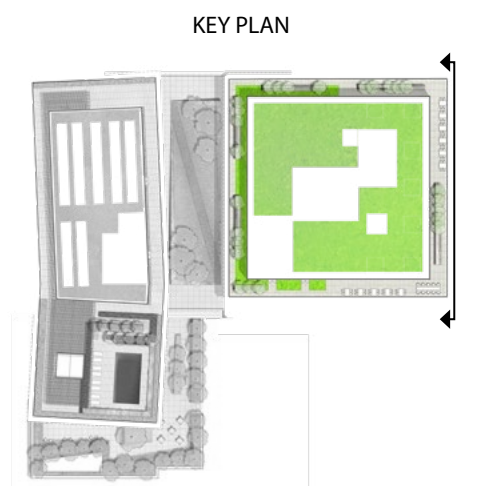
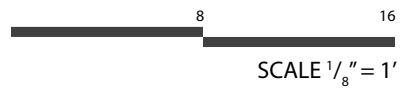
**E**  
Bishops Hat  
*Epimedium x versicolor*

KEY PLAN



## Materials and Planting- Hotel Roof

PUD Stage II Filing: Capitol Crossing III LLC and Capitol Crossing IV LLC: Square 566, Lots 861-862 (part of Record Lot 50)



# Landscape Elevation- Hotel Roof

PUD Stage II Filing: Capitol Crossing III LLC and Capitol Crossing IV LLC: Square 566, Lots 861-862 (part of Record Lot 50)



## Landscape View- Hotel Roof

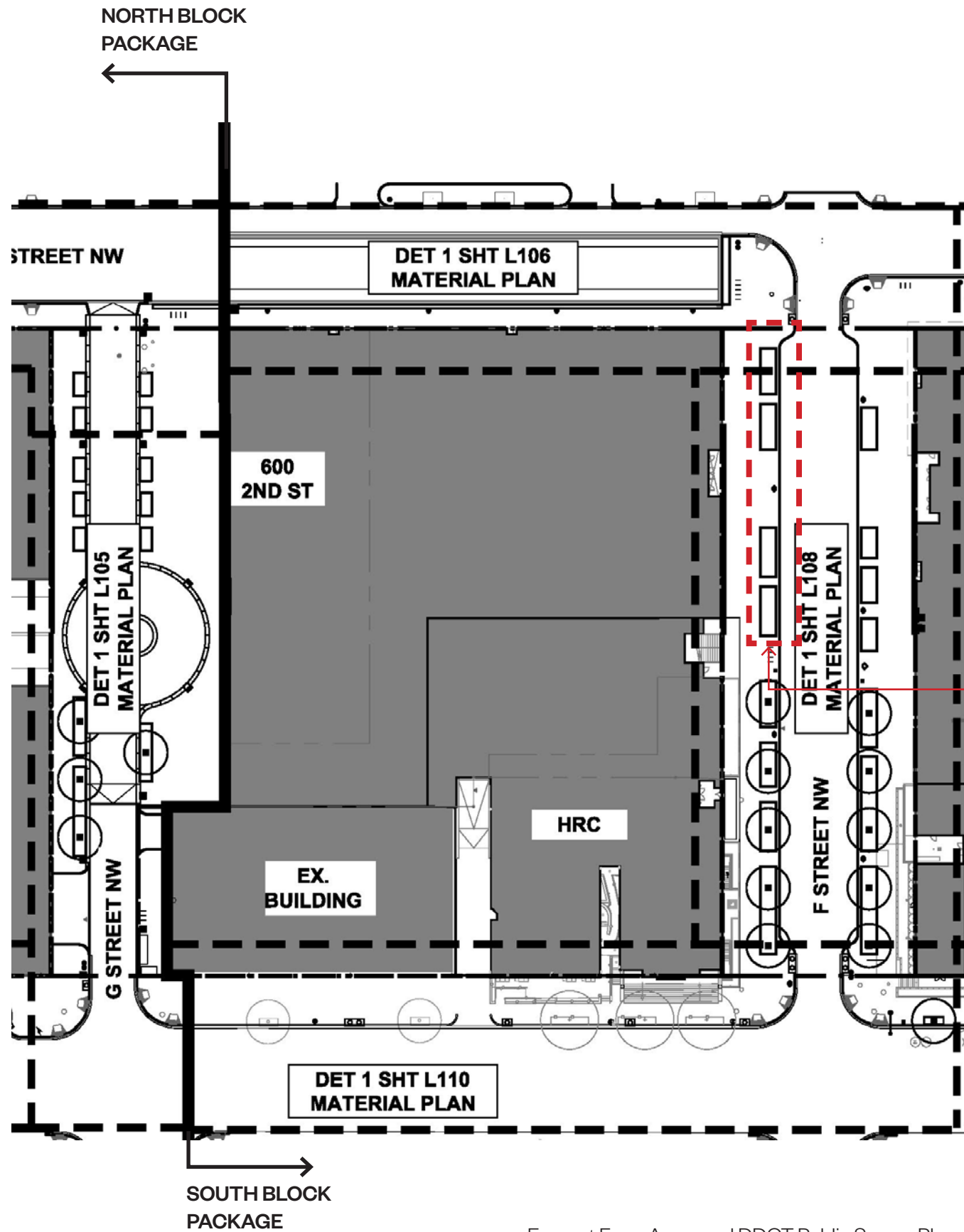
PUD Stage II Filing: Capitol Crossing III LLC and Capitol Crossing IV LLC: Square 566, Lots 861-862 (part of Record Lot 50)



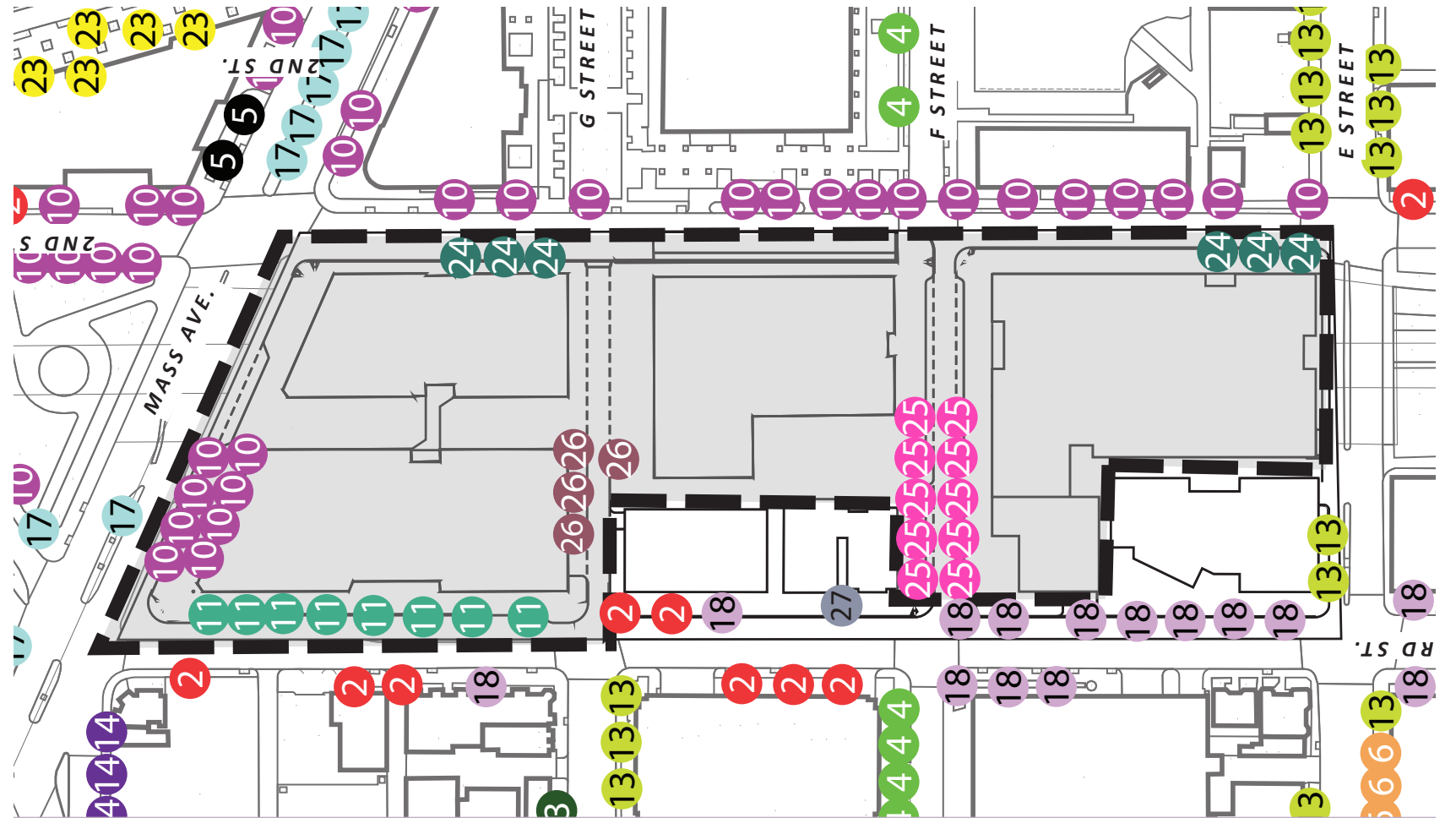


## Landscape View- Hotel Roof

PUD Stage II Filing: Capitol Crossing III LLC and Capitol Crossing IV LLC: Square 566, Lots 861-862 (part of Record Lot 50)



Excerpt From Approved DDOT Public Space Plans



Approved plans called for two sets of two planters for a total of 4 planters on east end of south elevation. Center Block proposal rearranges this to one stand alone planter and a set of three planters at south elevation for a total of 4 planters, and resizes 4 planters to accommodate with the proposed ground floor layout. See sheets 1-06, 1-09, 1-10, 1-11, 1-12 and 1-13.



10 MASS AVE: LITTLE LEAF LINDEN (TILIA CORDATA "GREENSPIRE")\*\*PER DOWNTOWN STREETScape REGULATIONS



25 F STREET: MAGNOLIA 'DENUData' \*\*PLANTER OVERSTRUCTURE. WITH LOW SOIL VOLUME. TREE RECOMMENDED BY DDOT GREEN INFRASTRUCTURE STDS.



26 G STREET: JAPANESE SNOWBELL (STYRAX JAPONICUS) \*\*PLANTER OVERSTRUCTURE. WITH LOW SOIL VOLUME.TREE RECOMMENDED BY DDOT GREEN INFRASTRUCTURE STDS.

Excerpt From Approved DDOT Public Space Plans

# Landscape Approved Streetscape and Trees



Excerpt From Approved DDOT Public Space Plans

## Landscape Approved Planter

PUD Stage II Filing: Capitol Crossing III LLC and Capitol Crossing IV LLC: Square 566, Lots 861-862 (part of Record Lot 50)